



# An introduction to Allstar Aug 8<sup>th</sup>, 2023 Program

KC9SEB – Paul Mitchell  
director3@frrl.org

# What is AllStar / AllStarLink?



AllStarLink is a world wide network of Amateur Radio repeaters, remote base stations, and hot spots accessible to each other via the Internet and/or private IP networks. AllStar software runs on a dedicated Linux computer (including the Raspberry Pi) that you host at your home, radio site, clubhouse, school, university, workplace, or computer center.

AllStar is based on the open source Asterisk PBX and is released under the GNU GPL and is free for anyone to use. The core of AllStar and AllStarLink is the powerful `app_rpt` application and associated modules that load into the Asterisk PBX system.

# How Did AllStar Start?



Jim Dixon WB6NIL (SK) and Steve Rodgers WA6ZFT wrote an extension to Asterisk to provide hardware control of repeaters

*“From its very onset, I saw that Asterisk was not only a good telephony switch, but also makes a good application implementation platform for virtually any telecommunication application that requires use of many of the things that Asterisk provides.”*

*“.... essentially provide an outlet of nearly 30 years of experience and frustration with repeater and remote base systems, in the form of designing a system essentially “the way I think a system should be.” – Jim Dixon*

Source: <https://wiki.allstarlink.org/wiki/ASLCorporate:History>

# “Why Would I Care About AllStar?”

Use repeaters you cannot normally access

- In a bad location? Want to talk to someone in another state or country?

Keep in touch with your node when away from home

- Just need an internet connection and it's as if you're home

Participate in nets or connect to hubs outside of your local repeaters

- BlindHams, Hawaiian Hub, East Coast Reflector, Philadelphia Hub

Did I mention that you don't need an expensive “proprietary” digital HT / Radio

- Use what every Ham has – an ANALOG VHF/UHF HT (Baofeng if you like 😊)

SIP Phone  
Autopatch  
Phone Portal



**Phone App**  
DVSwitch  
Zoiper  
Repeaterphone

**!! Lots of Connectivity Options !!**

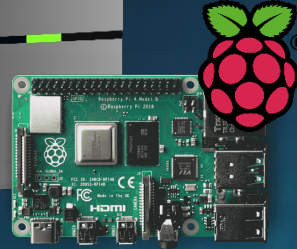


Repeater

HAMVOIP or ASL  
Software



RF Interface



VHF / UHF  
Analogue



Web Transceiver  
Droid/Dude Star  
Transceive



Connect to other  
Nodes, Repeaters and  
or Hub's

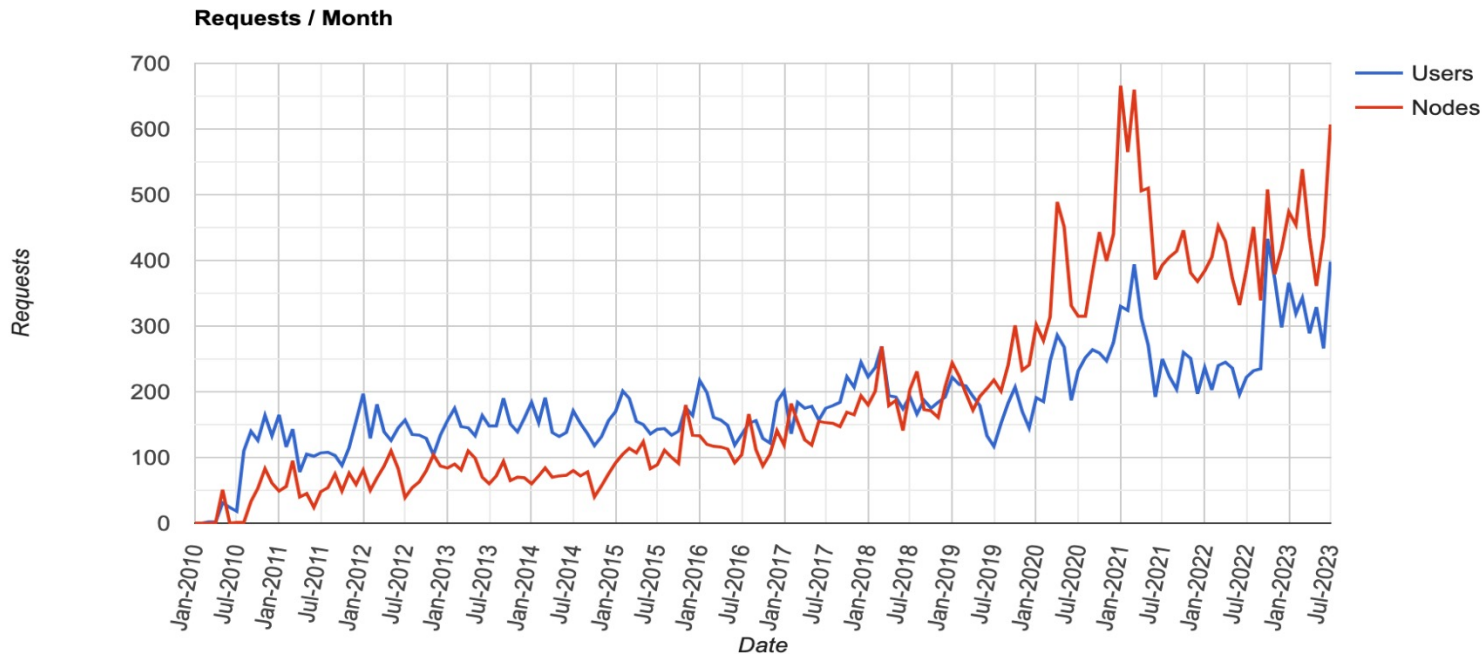
# AllStar Nodes 28,991 as of Today



# And Growing.....

## New User and Node Requests

as of 2023-08-01



# Active Node List



[Stats Home](#) [Map of Nodes](#) [Keyed Nodes](#) [Live Keyed Nodes \(Beta\)](#) [Donate](#)

Dark Mode  Off

## AllStarLink Keyed Nodes (Beta)

39 Active Calls

Controls



Filter:

	Node	Chart	Callsign	Frequency	CTCSS	Location	Last Heard	Connected Nodes
0	<a href="#">28677</a>	<a href="#">Bubble</a>	<a href="#">NE7AL</a>	444.925	123.0	Bigfork, Montana	0 secs ago	<a href="#">40668</a>
1	<a href="#">57885</a>	<a href="#">Bubble</a>	<a href="#">E25KD</a>	145.6375 MHz		Mueang Suratthani	1 secs ago	<a href="#">E25UZD</a> <a href="#">59155</a> <a href="#">E24JAT</a> <a href="#">59152</a> <a href="#">57895</a> <a href="#">57079</a> <a href="#">574402</a>
2	<a href="#">28452</a>	<a href="#">Bubble</a>	<a href="#">KW5C</a>	441.525 + 100.0	100.0	Beaumont,Tx	1 secs ago	
3	<a href="#">58985</a>	<a href="#">Bubble</a>	<a href="#">WB8ZMX</a>			St. Marys WV.	1 secs ago	
4	<a href="#">59436</a>	<a href="#">Bubble</a>	<a href="#">E25LG</a>	Rpt. 145.6750 MHz.		Hatyai, Songkhla	1 secs ago	<a href="#">59481</a> <a href="#">42873</a> <a href="#">586281</a>
5	<a href="#">41291</a>	<a href="#">Bubble</a>	<a href="#">W7EAT</a>	146.700-	103.5	Eatonville, WA	2 secs ago	
6	<a href="#">28702</a>	<a href="#">Bubble</a>	<a href="#">VE3BUY</a>	146.910-	162.2	Cobourg, ON	2 secs ago	<a href="#">28703</a>
7	<a href="#">2024</a>	<a href="#">Bubble</a>	<a href="#">KM6RPT</a>	448.280-	82.5	San Diego	2 secs ago	

Source: <http://stats.allstarlink.org/stats/keyedBeta>



# How to get involved with Allstar

1. Register for an AllStar Account [Login/Sign Up](#)
2. Do you want to access Allstar only?  
Allows Connectivity from phone / App etc.
3. Do you want to have your own node?  
Allows RF / Internet connectivity  
Requires either a Server (Physical / Virtual) or  
A Raspberry PI (Preferably a 4B)

Let's Discuss the options...

# For a NODE Build – There are TWO Software Options

## ASL – AllStarLink

<https://wiki.allstarlink.org/wiki/Downloads>

Can run on either Physical or Virtual X86 / Single Board Computer (Raspberry Pi / Beagle Bone Black)

## HAMVOIP

<https://hamvoip.org/#download>

Can **ONLY** run on Single Board Computer (Raspberry Pi / Beagle Bone Black)

# BUY

## Raspberry Pi Based

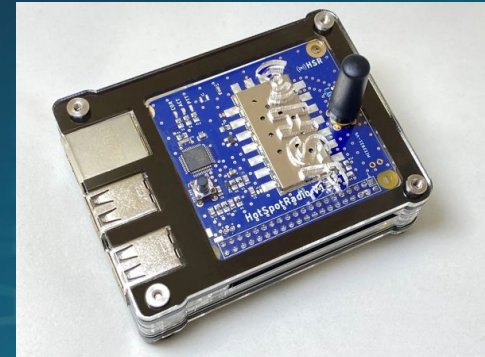
ClearNode <https://www.node-ventures.com/> ~\$355

- Built in RF radio
- Can be operated wired or wireless to Internet
- Affected by Raspberry Pi shortages



Hotspotradios <https://hotspotradios.com/hotspotradio> ~\$280

- Built in RF radio
- Can be operated wired or wireless to Internet
- Affected by Raspberry Pi shortages



# BUILD

## RF Modules

Ham Projects <https://hamprojects.info/>

- Adapters for a 'bring your own transceiver' node/repeater
- Self contained RF based nodes (\$80-\$125)
- You supply the Raspberry Pi (Subject to Availability)



HotSpotRadios [Hotspotradio-USB](https://hotspotradios.com/)

- Adapter for a 'bring your own transceiver' node/repeater
- USB Module (\$90)
- You supply the Raspberry Pi (Subject to Availability)



# BARE Bones – Still Requires Raspberry Pi

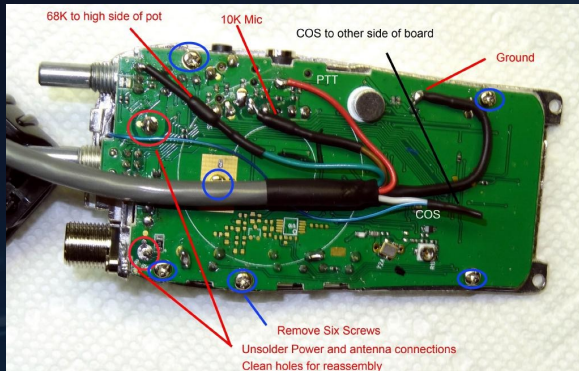
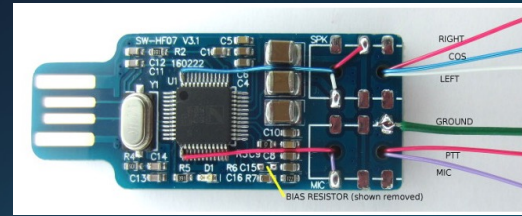
## Radio-Less (Full Duplex)

- USB Headphones (CM108 / CM119) (\$10)
- USB Sound Card CM108 (\$6)



## Radio Based Half Duplex (Baofeng 888s)

- USB Sound Card + HT (\$6 + \$18)



# Operating on Allstar



## Connecting your node to the network

Using another radio that has a keypad. You will use the commands listed below to connect.

While holding down the PTT button, press the keys listed below. The asterisk (\*) enters the command mode. Example: \*32000 - This will connect you to the HUB 2000.

- a. \*1(node number) - This Disconnects the node you are currently connected to..
- b. \*2(node number) - This is Monitor mode only. You can listen, but will not be able to talk.
- c. \*3(node number) - This will Connect you to the node you entered after the \*3.

\*A1 Announce local IP address of your node.

\*A3 Announce public IP address assigned to your node.

\*A5 Announce registration status of your node.

\*A9 One time parrot mode.

\*B6 Restart Asterisk

\*80 Play local ID

\*81 Play Time and Voice ID.

\*82 Play local time in 24 Hour format



# Webpage Control of Your Node - SuperMon2

Supermon2 V2.0 AllStar Manager

KC9SEB

EN51VO  
RPi4 Node

Allstar System Manager



Logout admin

Nodes HAMVOIP

Perm

[Connect](#) [Disconnect](#) [Monitor](#) [Local Monitor](#) [DTMF](#) [Lookup](#) [Rpt Stats](#) [Bubble](#) [Control](#) [Favorites](#)

[Configuration Editor](#) [Iax/Rpt/DP RELOAD](#) [AST START](#) [AST STOP](#) [RESTART](#) [Server REBOOT](#) [SW Update?](#)

[AllStar How To's](#) [AllStar Wiki](#) [CPU Status](#) [AllStar Status](#) [Node Info](#) [Active Nodes](#) [All Nodes](#) [Database](#) [SMLOG](#)

[GPIO](#) [Linux Log](#) [AST Log](#) [Connection Log](#) [Web Access Log](#) [Web Error Log](#) [SimpleUSB](#) [Restrict](#)

[Display Configuration](#)

[System Info](#)

Node **59551** => **KC9SEB HUB Node Plainfield, IL**  
[Bubble Chart](#) [IsNodes](#)

Node	Node Information	Received	Link	Dir	Connected	Mode
59551	Idle <b>Plainfield, IL (60°F, 15°C / Sunny)</b> CPU= <b>54C</b> - Up since 2023-07-09 18:30:28 - Up-to-date load average: 0.08, 0.08, 0.02 Logs - 2.4M 5% used, 48M remains 59551 Registered Allstar					

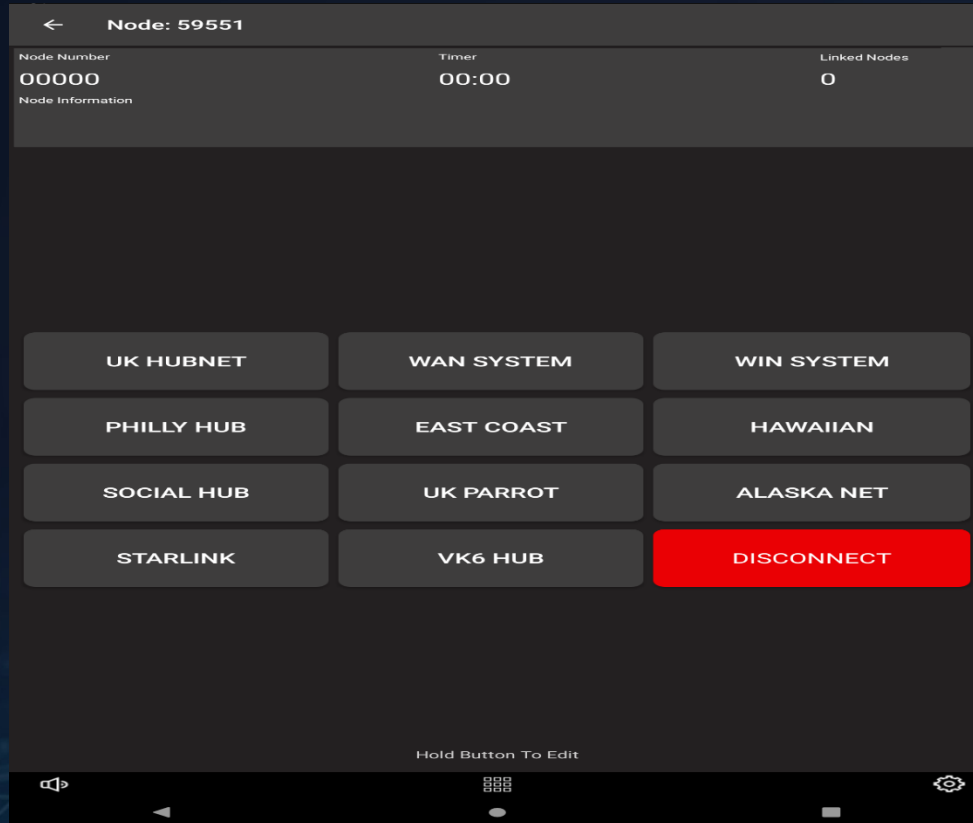
No Connections.

You are logged as **admin** from IP- 172.16.1.208 using ini file - 'user\_files/allmon.ini'

System maintained by: **Paul Mitchell, KC9SEB**



# Phone App Control - Node Remote – Android / iOS



# Summary

- It's useful for getting to non-local repeaters, hubs, that support AllStar
- Very good sound quality, and most importantly, "It feels like analog FM"
- Low cost barrier for entry.
  - Raspberry Pi + \$10 headphones and you're in
- Many options to play with (Radio-less, simplex, duplex)
- Use of your existing HT (Non Digital)

# Thank-You

Feedback and or questions?  
>> [director3@frri.org](mailto:director3@frri.org)